

INFORMATION FOR EXCHANGE STUDENTS

2016–2017



UAB THE UNIVERSITY OF
ALABAMA AT BIRMINGHAM
Knowledge that will change your world



Thank you for your interest in UAB. You are not alone—we are consistently ranked as one of the top 12 most diverse campuses in the U.S., with students from more than 80 countries coming together to learn. Being this far from home can be intimidating, but we are here to offer you all the information and assistance you need to feel at home at UAB.

WELCOME TO THE UNIVERSITY OF ALABAMA AT BIRMINGHAM

CAMPUS

SIZE

86 city blocks

STUDENT BODY

18,568

UNDERGRADUATES

11,502

GRADUATE AND POST-GRADUATES

7,066

INTERNATIONAL STUDENTS

575

AVERAGE CLASS SIZE

31

STUDENT-TO-FACULTY RATIO

18:1

AVERAGE HIGH SCHOOL GPA

3.62

ACADEMIC TERM Semester

RESEARCH LAB SPACE

529,169 square feet

TYPE OF SCHOOL

Public, co-ed, four-year
research university

ESTABLISHED

1969

STUDENT LIFE

6 residence halls

10+ dining facilities

1 state-of-the-art Campus
Recreation Center

250+ student organizations

22 fraternities and sororities

6 men's and 11 women's
sports in NCAA Division I

24-hour campus police
protection

Free career and job-
placement assistance

ACADEMICS

51 undergraduate (bachelor's) degree programs

9 pre-professional programs

75 minors

52 master's and 39 doctoral degree programs

10 academic colleges and schools: Arts and
Sciences, Business, Dentistry, Education,
Engineering, Health Professions, Medicine,
Nursing, Optometry, and Public Health

2 libraries holding 1,000,000+ items

91% of faculty members holding doctoral degrees





MAJORS THAT MAKE US UNIQUE

Biomedical Engineering — one of only two undergraduate programs in Alabama

Industrial Distribution (medical equipment and supplies) — the only one of its kind in the Southeast

Neuroscience — one of only 44 undergraduate programs in the U.S.

Forensic Accounting and Information Technology — one of only four in the U.S.

Biomedical Sciences — only program in Alabama with the resources of an on-campus academic medical center

STANDING OUT

1st in the nation among public universities for federal research funding per incoming freshman

11th among public universities for National Institutes of Health (NIH) research funding

Among the top 12 universities nationally for diversity (per the Princeton Review)

U.S. News and World Report:
Among the top 25 graduate programs in the nation in 12 programs with four in the top 10

Classified by The Carnegie Foundation for both “very high research activity” and “community engagement.”



COLLEGE COSTS

Estimated costs for a one semester exchange

Room & board, health insurance, textbooks **\$10,990**
Tuition for exchanges is paid to your home campus

(Costs above are based on 2014-2015 figures.)

HOW TO APPLY

Ask your home campus student exchange/study abroad office for their student exchange application. Spaces are limited, so your home campus will need to nominate you as an eligible exchange student. You must apply to your home campus first before contacting UAB.

[Ask your home campus student exchange office for their exchange application deadline.](#)

After you've been accepted as an exchange student by your home campus, your home campus study student exchange office will send your nomination to UAB Education Abroad, who will contact you regarding applying to UAB.

ACADEMIC PROGRAMS

UNDERGRADUATE MAJORS AND CONCENTRATIONS

COLLEGE OF ARTS & SCIENCES

African-American Studies

Anthropology

Art

Art Education

Art History

Art Studio

Fine Art (Graphic Design)

Biology

Marine Science

Molecular Biology

Chemistry

Biochemistry

Chemical Education

Forensic Chemistry

Polymer Chemistry

Communication Studies

Communication Management

Mass Communication

Broadcasting

Mass Communication Journalism

Mass Communication Public

Relations

Computer and Information Sciences

Computer Networking

Criminal Justice

Computer Forensics/Cybercrime

Corrections

Policing

Criminology

Forensic Science

Juvenile Justice

Law

English

Literature

Creative Writing

Linguistics

Professional Writing

Foreign Languages

French

Spanish

History

International Studies

Mathematics

Applied Mathematics and

Scientific Computation

Mathematical Reasoning

Music

Music Technology

Music Education (Instrumental)

Music Education (Choral)

Musical Theatre

Natural Science

Biology

Chemistry

Computer Science

Mathematics

Physics

Neuroscience

Philosophy

Philosophy, Politics and

Economics

Physics

Biophysics

Political Science

American Government/Political

Theory

Comparative Politics/

International Relations

Psychology

Social Work

Sociology

Social Psychology

Theatre

Pre-Professional Design and

Technology

Pre-Professional Performance

General Theatre

SCHOOL OF BUSINESS

Accounting

General Accounting

Forensic Accounting and

Information Technology

Economics

Economic Analysis and

Policy

Philosophy and

Political Economy

Finance

Financial Management

Investments and

Institutions

Real Estate

Industrial Distribution

Medical Equipment

and Supplies

Information Systems

Management

Business Administration

General Management

Human Resource Management

Operations Management

Marketing

Marketing

Management

Professional Sales
Management
Promotion/Sales
Retail Marketing
Management
Social Media Marketing

SCHOOL OF EDUCATION

Early Childhood and
Elementary Education

Health Education
Community Health
Human Services

Secondary Education/
Biology Double Major

Secondary Education/
Biology Double Major
General Science

Secondary Education/
Chemistry Double Major

Secondary Education/
English Double Major

Secondary Education/
History Double Major

Secondary Education/
Mathematics Double Major

Secondary Education/
Physics Double Major

Kinesiology
Teacher Certification
Exercise Science
Fitness Leadership

SCHOOL OF ENGINEERING

Biomedical Engineering
Biomaterials and
Tissue Engineering
Biomechanics

Civil Engineering
Sustainable Engineering
Design and Construction
Engineering

Electrical Engineering

Materials Engineering

Mechanical Engineering
Biomaterials
Metallurgy
Polymer Matrix
Composites

SCHOOL OF NURSING

Nursing

SCHOOL OF HEALTH PROFESSIONS

Biomedical Sciences

Health Care Management
General Manager
Long-Term Care
Administration
Occupational Therapy
Fast Track
Pre-professional Degree

SCHOOL OF PUBLIC HEALTH

Public Health
Environmental Health
Global Health
Public Health Preparedness

PRE-PROFESSIONAL PROGRAMS

If you plan to attend a professional school after graduation, UAB's pre-professional programs give you an edge. You can choose a pre-professional program in addition to any major at UAB.

Pre-Dentistry

Pre-Law

Pre-Medicine

Pre-Nurse Anesthesia

Pre-Occupational Therapy

Pre-Optometry

Pre-Pharmacy

Pre-Physical Therapy

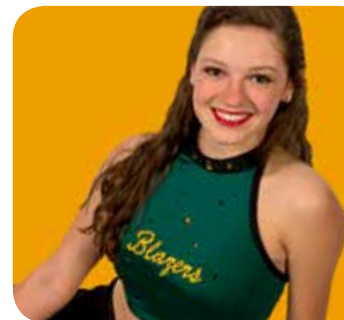
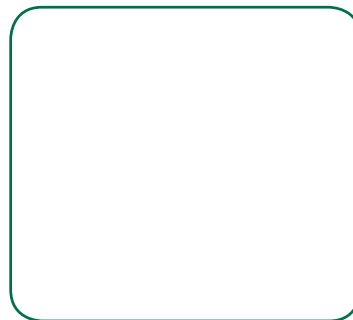
Pre-Surgical Physician Assistant

THE UAB ENGLISH LANGUAGE INSTITUTE AND CONTINGENT ADMISSION FOR UNDERGRADUATE STUDENTS

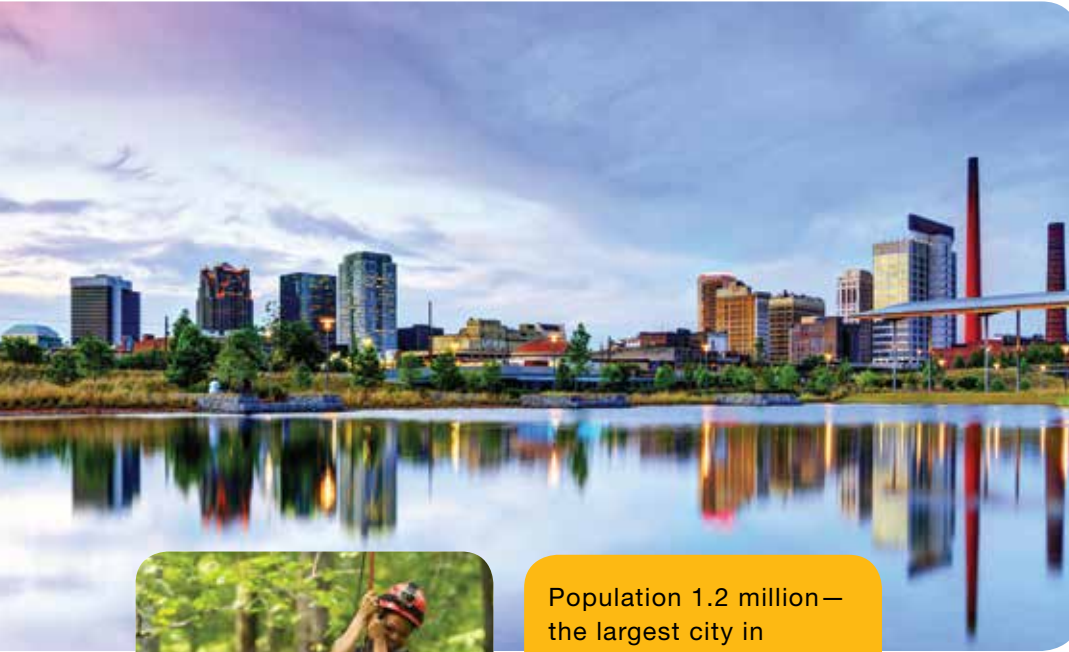
Students who do not meet the minimum language requirements for admission to UAB may be considered for contingent admission.

Applicants offered Contingent Admission must submit an Intensive English Program (IEP) application. You will be required to complete all levels of the program or achieve the minimum test score requirement for IELTS or TOEFL before beginning your academic undergraduate coursework.

Learn more about the UAB English Language Institute online at uab.edu/eli.
For further information, call 1.205.996.5468 or e-mail iep@uab.edu.



BIRMINGHAM, ALABAMA



Population 1.2 million—
the largest city in
Alabama

A modern city with a
multicultural population

A moderate climate with
four distinct seasons

THINGS TO DO AND SEE*

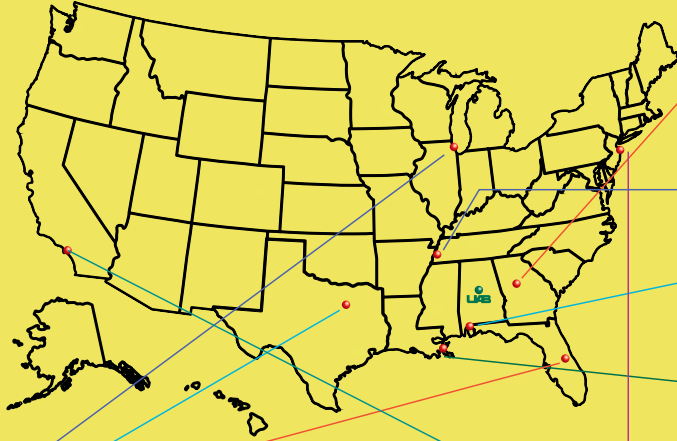
Arts and Culture: Alabama Ballet • Alabama Jazz Hall of Fame • Birmingham Museum of Art • Birmingham Civil Rights Institute • McWane Science Center

Attractions: Birmingham Botanical Gardens • Birmingham Zoo • Southern Museum of Flight • Vulcan Park

Sports: Barber Motorsports Park • Birmingham Barons baseball • Robert Trent Jones Golf Trail • UAB sports

**just a sampling*

GOING PLACES



Atlanta, Georgia

Memphis, Tennessee

Gulf Coast beaches

New Orleans, Louisiana

Orlando, Florida

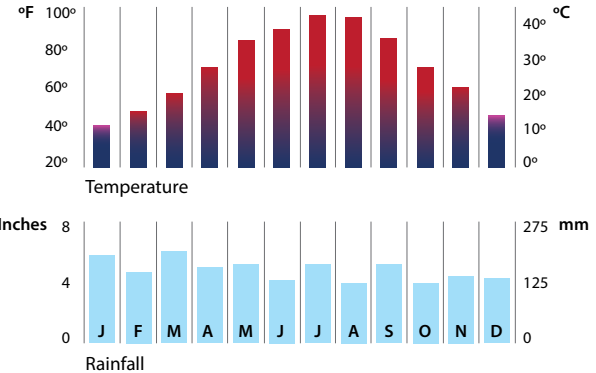
New York City, New York

Dallas, Texas

Los Angeles, California

Chicago, Illinois

We recommend Birmingham-Shuttlesworth International Airport, with 130 flights daily to 130 cities throughout the U.S.—just 15 minutes from campus.



DAILY CAMPUS TOURS

MONDAY – FRIDAY
9:30 A.M. AND 2:00 P.M.

VIRTUAL TOUR

24/7, 365 DAYS A YEAR

Learn more about tours at
uab.edu/tours



FOR MORE INFORMATION

UAB EDUCATION ABROAD

Heritage Hall 523
1401 University Boulevard
Birmingham, AL 35233 USA
<http://educationabroad.uab.edu>
educationabroad@uab.edu
+1-205-975-6611

UAB ENGLISH LANGUAGE INSTITUTE

uab.edu/eli • iep@uab.edu

